

*Renegade*  
RV



**CLASS C DIESEL**  
**2026 VERONA LE**

Version 2026.1 • Current as of 9/04/2025  
All Features Are Subject To Change Without Notice Or Obligation

# MOTORHOME LUXURY THAT GOES THE EXTRA MILE

Surround yourself with the space you deserve while maintaining exceptional quality and design in the Renegade RV Verona LE. The 2026 Verona LE is a **Class C** diesel that features hidden sleeping areas, polished solid surface countertops, solid hardwood cabinets and a tile backsplash. A full bath and plenty of storage allow you to enjoy all the comforts of home while on the road. The Renegade Verona LE has everything you need in an RV.

LENGTH	TOWING CAPACITY	BATHROOMS
37' 6"-39' 6"	20,000 lbs	1-1.5

# EXTERIOR PAINT OPTIONS



**PATHFINDER**



**RANGER**



**TRAILBLAZER**



**VOYAGER**



**WAYFINDER**



**POLARIS**



**TUNDRA**



**ATLAS LR**

# AVAILABLE FLOORPLANS



38LDG



40LBH



40LRB



40LTS

# INTERIOR DETAILS



Cape Cod Cabinetry // Westfield Interior Décor // The 2026 Verona LE has a residential feel with porcelain tile flooring and maple hardwood cabinetry.



Cape Cod Cabinetry // Westfield Interior Décor // Prepare your favorite meals on the road in this beautiful and functional kitchen.



Cape Cod Cabinetry // Westfield Interior Décor // There are plenty of comfortable seating options for the entire crew in the 2026 Verona LE.



Cape Cod Cabinetry // Westfield Interior Décor // The bedroom in the 2026 Verona LE has a memory foam mattress and plenty of storage.



Cape Cod Cabinetry // Westfield Interior Décor // The primary bathroom features a vanity with a solid surface countertop and an integrated sink.



Cape Cod Cabinetry // Westfield Interior Décor // The bathroom has plenty of storage with a maple hardwood vanity.



Cape Cod Cabinetry // Westfield Interior Décor // The 2026 Verona LE gives you the driving power you need to safely get to your destination.



Cape Cod Cabinetry // Westfield Interior Décor // Make memories that will last a lifetime in this luxury Class C motorhome.

# INTERIOR DÉCOR SELECTIONS



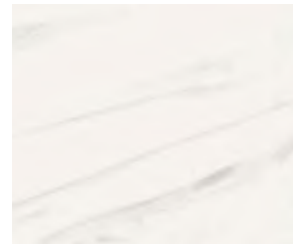
## Oak Bluffs Décor



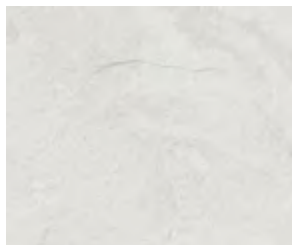
Backsplash



Bedsread



Countertop



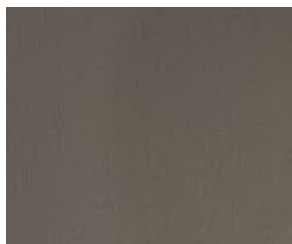
Flooring



Furniture



Sofa Pillows



Valance Accent

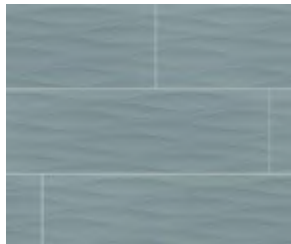


Valance

# INTERIOR DÉCOR SELECTIONS



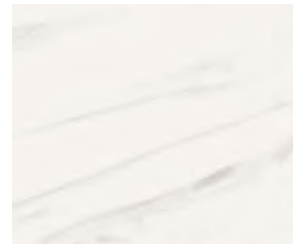
## Seabrooke Décor



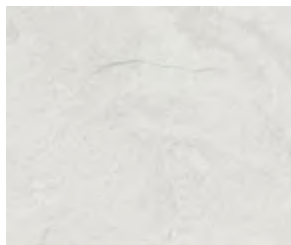
Backsplash



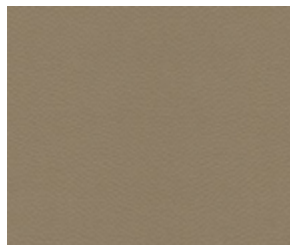
Bedsread



Countertop



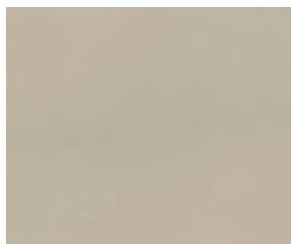
Flooring



Furniture



Sofa Pillows



Valance Accent



Valance

# INTERIOR DÉCOR SELECTIONS



## Westfield Décor



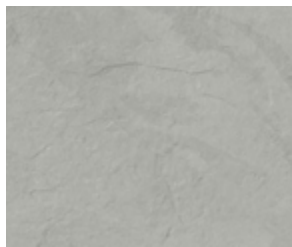
Backsplash



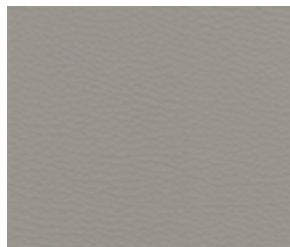
Bedsread



Countertop



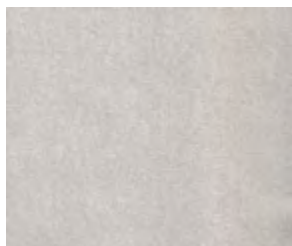
Flooring



Furniture



Sofa Pillows



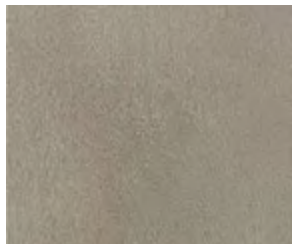
Valance Accent



Valance



## Solid Wood Cabinetry Options



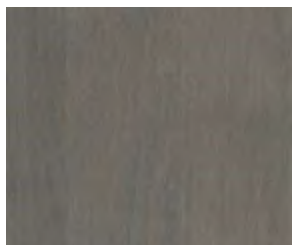
Cape Cod



Essence White



Lakewood



Rockport



## BUILT BY THE BOLD, FOR THE BOLD

We became one of the world's top motorhome brands by building extraordinary coaches. We remain the industry rebels by continuously challenging the status quo in terms of quality, value, power, versatility, durability and style. Starting with the best chassis, and ending with a motorhome that outperforms and outlasts - Renegade RVs are designed for extreme luxury and extreme adventure. Renegade RVs are built for you.

# STANDARDS & OPTIONS

	<b>38LDG</b>	<b>40LRB   40LBH   40LTS</b>
<b>Overall Length</b>	37' 6"	39' 6"
<b>Exterior Width</b>	99.25"	99.25"
<b>Wheelbase</b>	285"	309"
<b>Overall Exterior Height</b>	12' 10"	12' 10"
<b>Interior Height</b>	84"	84"
<b>Fuel Capacity</b>	100 Gallons	100 Gallons
<b>Fresh Water</b>	150 Gallons	150 Gallons
<b>Gray Water</b>	75 Gallons	75 Gallons
<b>Black Water</b>	75 Gallons	75 Gallons

## CHASSIS AND CAB

- Freightliner® M2-106 Plus
- Cummins® L9 Engine with 360HP, 1150 lb. ft. Torque
- 37,600 lbs GVWR
- Allison® 3200 TRV Electronic 6-Speed Transmission
- 20,000 lbs Towing Capacity
- Dual 50-Gallon Aluminum Fuel Tanks (100-Gallon Total Capacity)
- 6-Gallon DEF Tank
- 4-Wheel Disc Brakes
- Polished Aluminum Wheels with Center Caps
- Airliner® Rear Air Suspension
- Auto Drain Valve for Air Brake Reservoirs
- Garmin® Touch Screen, Bluetooth, GPS, and RV Maps
- Rear & Side View Cameras on Dedicated Color Camera Monitor
- Upgraded Cab Sound System
- Premium Freightliner® Sound and Thermal Insulation Package
- LED Headlight Assemblies
- Power Windows and Door Locks
- Power/Heated Remote-Control Mirrors
- Air Ride Driver and Passenger Seat Pedestals with Swivels
- Soft Touch Driver/Passenger Seats with Armrests, Heat, and Manual Lumbar
- Full Cab Mat
- Auxiliary Air Chuck and Hose
- Freightliner® Safety Assurance Package:
  - Lane Guidance
  - Electronic Stability Control
  - Collision Mitigation

## EXTERIOR FEATURES

- Aerodynamic Fiberglass Front and Rear Caps, Transition, Fenders, and Cab Steps
  - Four-Point Hydraulic Leveling System with App
  - Lighted Exterior Entry Door Assist Handle with Keyless Entry
  - Powered Folding Double-Entry Steps
  - (9) Colorway Paint Options
  - Roof-Mounted Girard® 2-Stage Lateral Arm Awning with LED Lights with End Caps
  - Slide Toppers with Covers
  - Frameless Dual-Pane Tinted Windows with Screens
  - Power Locking, Side-Swing Aluminum Compartment Doors with Single Handle Paddle Latches and Double-Catch
  - Steel Storage Compartments with Carpeted Lining
  - Diamond Shield® Nano-Fusion™ Paint Protection (Front Mask)
  - Full-Width Rock Guard Mud Flap
  - Motion-Activated Compartment Lighting
- 

## CONSTRUCTION

- 2” Vacuum Laminated Sidewalls with Welded Aluminum Framing
- 1.5” High-Density Foam Insulation in Sidewalls and Roof
- Welded Aluminum Roof Truss System with Framed Wall Cutouts
- “Super Sandwich” Floor Construction with Composite Underbelly Includes:
  - 2” Welded Steel Floor Joist System Mounted to 3” Steel Longitudinal Floor Beams
  - 3/4” Fir Plywood Deck Over 2 x 4 Wood-Framed Residential Floor with Thermal and Sound-Deadening Insulation

## PLUMBING SYSTEMS

- 150 Gallon Fresh Water Tank
- 75 Gallon Gray Tank
- 75 Gallon Black Tank
- See-Level® Tank Monitoring system
- Full Maintenance Wet Bay
  - Black Tank Flush System
  - Fresh Water Fill - City Water Hookup
  - Outside Faucet with Sprayer
- On-Demand Water Pump
- Whole House Water Filtration System

## INTERIOR FEATURES

- (3) Interior Décor Options
- Décor Coordinating Fabric Valances
- Double Roller-Manual Day/Powered Night Shades
- Soft Touch Padded Walls and Ceiling
- 12" x 24" Porcelain Tile Flooring Throughout
- Maple Hardwood Cabinetry
- 3-Wood Stain Color Options, 2-Finish Options
- Hardwood Dovetail Drawers on Soft Closing Slides
- Framed Doors on Soft Close Hidden Hinges
- Pantry with Push Release Drawer Guides
- Hardwood Slide Fascia with Lighting
- Satin Nickel Door Hardware
- Satin Nickel Kitchen Faucet
- Solid Surface Countertops Throughout
- Rectangular Single Bowl Undermount Kitchen Sink with Cover
- Accent Lighting at Toe Kicks
- Grouted Tile Backsplash
- LED Dimmable Lighting
- Memory Foam Mattress
- Ultra Soft Touch Vinyl Furniture Upholstery
- Convertible Booth Dinette with Storage
- Mini Booth Dinette with Storage
- Sofa Sleeper, Hide-a-Bed
- Loveseat with Storage (4OLTS Only)
- Aerocap with Storage Cabinet

## BATH

- Maple Hardwood Vanity, Medicine, and Linen Storage Cabinets
  - LED Vanity Light
  - Deluxe Satin Nickel Bath Faucet and Adjustable Showerhead
  - Satin Nickel Towel Bar, Towel Ring, and Toilet Paper Holder
  - Porcelain Macerator Toilet with Push Button Flush
  - Solid Surface Countertop with Integrated Sink
  - Wavy Patterned Fiberglass Shower with Glass Door
  - Skylight Over Shower
- 

## APPLIANCES

- 18 cu. ft. French Door Residential Refrigerator with Stainless-Steel Doors
- Recessed 2-Burner Induction Cooktop with Polished Solid Surface Covers
- 1.7 cu. ft. Stainless-Steel Convection Microwave Oven
- Aqua-Hot® 450D Hydronic Water and Zone Heating System
- (2) 15,000 BTU Roof A/C with Heat Pumps and Plumbed Condensation Lines
- Ducted Air Conditioning
- MaxxAir® Power Vents
- Central Vacuum System with Floor Sweep Feature
- Pre-Wired and Plumbed for Optional Washer/Dryer
- Carbon Monoxide, LP and Smoke Detectors, and Fire Extinguisher

## ELECTRICAL SYSTEMS

- 8KW Onan® Quiet Diesel Generator
  - Automatic Generator Start System
  - 50-Amp Electrical Panel
  - 3,000W True Sine Wave Inverter
  - Transfer Switch with Surge Protection
  - (2) 270Ah High-Capacity Lithium Batteries
  - (3) 200W Solar Panels
  - Multiplex Control System with Wi-Fi App Control
  - USB/USB-C Charging in Living Area, Bedroom, Kitchen, and Bunk Areas
  - 50-Amp Power Retractable Shore Cord Reel
  - 12V Holding Tank Heaters, Gray and Black Tanks
- 

## ENTERTAINMENT SYSTEMS

- 50" 4K Smart LED TV in Living Area
- Soundbar Home Theater with Bluetooth Streaming and Wireless Subwoofer in Living Area
- 32" 4K Smart LED TV in the Bedroom
- Exterior Entertainment Center
  - 43" Smart LED TV on Swing Arm
  - Soundbar with Bluetooth Streaming
  - USB Charging
- Everest 2.0 5G Rooftop OTA Antenna with Aspen WiFi Router and 5G Ready (SIM Card Req.)
- Standard Starlink® with Mobility Mount

## POPULAR OPTIONS

- Powered Reclining Theater Seat with Head Tilt in lieu of Standard Sofa
- Floor Heat Throughout
- Cabover Bunk with Window, Power Shade, and 24" Smart LED TV
- Winegard® In-Motion Satellite System
- Winegard® Trav'ler Stationary HD Satellite System (N/A with Starlink®)
- Add Up to 1 More 200W Solar Panel (Quantity Varies by Floorplan and Options)
- Additional 270Ah High-Capacity Lithium Battery (Limit 1)
- Additional 3000W True Sine Wave Inverter with Forward A/C Connected
- Black Wheels Upgrade
- Caliber 9® Grille Package (Available in Chrome or Black)
- Washer and Dryer Stack
- Premium Exterior Refrigerator/Freezer on Slide Tray
- Holding Tank Sewage Macerator System
- Underbody LED Lighting
- Exterior 12V Scene Lighting-Bright LED
- ShowerMiser Water Management System with Electronic Sensor

# THE RENEGADE RV WARRANTY

New Renegade motorhomes are covered by a 1-year unlimited miles limited warranty, plus a 3-year 36,000-mile limited structural warranty.

All Renegade motorhome chassis, engines and transmissions, and drivetrain warranties are provided and administered by their respective manufacturers.

For specific information about these warranties, [ask your dealer](#) or [contact Renegade RV](#).

[RenegadeRV.com](http://RenegadeRV.com)

